



-- Saltnex --

The environmentally friendly way

Nyholmsvej 7 • 8930 Randers NØ • Denmark • VAT DK37629782 • +45 27 10 88 14 • tm@saltnex.dk • www.saltnex.com

Saltnex

Saltnex A/S

Nyholmsvej 7
8930 Randers NØ
Denmark
VAT: DK37629782
www.saltnex.com

Information, sales and spare parts

Thommas Mannik
☎ + 45 27 10 88 14
✉ tm@saltnex.dk

Service and installation

☎ + 45 30 80 88 14 or + 45 30 80 88 16
✉ service@saltnex.dk

Accounting

Lene Flarup Jepsen
☎ + 45 28 88 95 58
✉ lene@saltnex.dk

Quality Danish machinery for a cleaner environment



See Saltnex machines in action

Simple and environmentally friendly

Saltnex makes many different sizes of multifunctional liquid spreaders. We're sure to have a machine that meets your requirements and makes work a little more enjoyable.

Our liquid spreaders tackle slippery pavements, paths, roads, steps and other hard-to-reach areas with ease and efficiency. The machines use salt solution rather than solid salt, which means precise dosing, a greater range, less salt consumption and lower costs when treating icy surfaces.

Using salt solution on icy surfaces is a gentler way of treating surfaces and better for buildings, trees, plants, groundwater and delicate pet paws.

Saltnex liquid spreaders are also a simple option for dust binding, cleaning, weed and algae control.

What liquids can I use?

You can use salt solution, CMA or other types of Nordic Swan Ecolabelled deicing agent in our liquid spreaders. They also work with algae cleaners or a gentle detergent/weedkiller.

Who are Saltnex?

Saltnex was established in 2016 as part of the family-owned Randers Maskinfabrik. Ably assisted by Hans Curt Nexgaard and his vast expertise, drive and experience, Randers Maskinfabrik decided to start producing liquid spreaders at the factory.

From day one, we have listened to our customers and transformed their wishes and requirements into functioning machinery. And we've never stopped listening.

The development of our liquid spreaders is backed up by considerable industry know-how and important environmental considerations. Every single machine is produced with Danish quality in mind - from the materials and craftsmanship to the machining.



An essential trolley

This small yet high-performance trolley is easy to handle, with an unladen weight of just 45 kg and a lift-friendly width of almost 73 cm. The adjustable handle and large pneumatic rubber wheels make it extremely comfortable for the operator to drive. The trolley was developed in response to requests from local municipalities, housing associations, institutions and Danish State Railways. It offers the user a simple way of treating slippery roads, algae, weeds and dust. With its hand lance and flex hose, it makes it easy to spray stairwells, doorways and other hard-to-reach areas. The transparent tank can hold 50 litres of liquid, while the battery can last six tankfuls before it needs recharging.



Support wheels with brake



Flex hose and foldable coupler
bolt drawbar

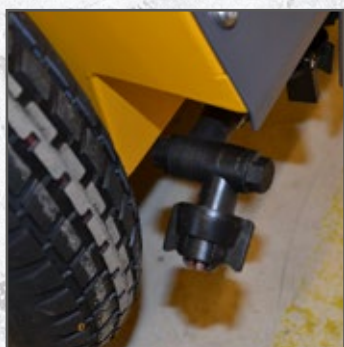


Drawbar

Specifications 7.0

Specifications & standard equipment	Additional equipment
<ul style="list-style-type: none"> • Electronic pump and charger • Hand lance with five-metre flex hose • Adjustable amount of liquid • Manometer for checking liquid • Side nozzles • Spreading width from 80 to 200 cm • Large pneumatic rubber wheels • Swivelling support wheel with brake 	<ul style="list-style-type: none"> • 12-metre hose reel with hand lance • Foldable drawbar (tow hitch) • Foldable coupler bolt drawbar • Crane fittings • On/off remote control
Size & range	
Capacity (l)	50
Unladen weight (kg)	45
Dimensions (cm)	H: 58.7 excl. lever W: 72.4 D: 48.6
Max. range (m²)	2,500
Capacity and range before recharging	300 litres/approx. 15,000 m²

Dimensions and weight may vary depending on equipment



Side nozzle



On/off remote control



12-metre hose reel

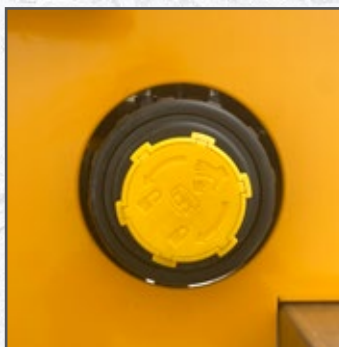


Liquid spreader lift model

Prevent ice and algae formation effectively with Model 7.1. The easy-to-use lift model is designed to work on all tractors. The sectioned tank makes it stable when driving around bends or braking and means less splashing. The transparent tank also makes it easy to see how much liquid is left. Model 7.1 has PTO operation and an on/off control. You can also purchase a wide range of accessories such as the CPU control system. This is a drive-dependent control that automatically adjusts the speed and stop. Or how about a filling coupling that makes filling the tank even easier? These are just some of the accessories that you can choose from.



Stainless steel boom



Suction filter keeps the liquid clean



On/Off remote control

Specifications 7.1

Specifications & standard equipment		Additional equipment		
<ul style="list-style-type: none">• Two-cylinder diaphragm pump delivers 65 l/min.• PTO operation of pump• Adjustable amount of liquid, from 10 ml/m² up• Manometer for checking liquid• Side nozzles (100 cm) for both sides• Standard spreading width of 100 to 330 cm• Sectioned tank• On/off remote control• Suction filter		<ul style="list-style-type: none">• 12-metre hose reel with hand lance• CPU control system• GPS tracking with data transfer• GPS speed sensor• Flower watering kit• Filling coupling• Hydraulic operation of pump• Boom size of 130 to 200 cm• Mounting bracket for lift arm		
Sizes & ranges				
Capacity (l)	200	350	500	800
Unladen weight (kg)	120	135	165	250
Dimensions (cm)	H: 109 W: 96.6 D: 82.5	H: 112.4 W: 101.7 D: 92.3	H: 129.4 W: 101.7 D: 102.1	H: 146.6 W: 124.0 D: 115.4
Standard boom size (cm)	100	100	100	130
Range at 20 ml per m ²	10,000	17,500	25,000	40,000

Dimensions and weight may vary depending on equipment



12-metre hose reel with hand lance



CPU control system



Filling coupling with spigot



Liquid spreader for tool carrier

Treating slippery surfaces has never been easier. Although model 7.2 is designed to sit on top of tool carriers such as those from Kärcher, Egholm, Vitra or Timan, it can also be placed on top of a pickup load. Its tank is sectioned, which ensures stability and no splashes when driving around bends or braking. The transparent tank also makes it easy to see how much liquid is left. Model 7.2 has PTO operation and an on/off control. It's also possible to purchase a range of accessories, such as a CPU control system or GPS tracking with data transfer, which keeps track of everything from liquid consumption to time and location.



Stainless steel boom



12-metre hose reel with hand lance



Mounting frame

Specifications 7.2

Specifications & standard equipment		Additional equipment			
<ul style="list-style-type: none">• Two-cylinder diaphragm pump delivers 65 l/min.• Hydraulic operation of pump• Adjustable amount of liquid, from 10 ml/m² up• Manometer for checking liquid• Side nozzles (100 cm) for both sides• Standard spreading width of 100 to 330 cm• Sectioned tank• On/off remote control• Suction filter		<ul style="list-style-type: none">• 12-metre hose reel with hand lance• CPU control system• GPS tracking with data transfer• GPS speed sensor• Flower watering kit• Filling coupling• Mounting frame (enquire about model)• Offset leg• Reinforcement/extension for leg• Wheel for offset leg• Electric pump 52 l/min. (+ 20 cm in depth)• Boom size of 130 to 200 cm• Lashing bracket for fastening			
Sizes & ranges					
Capacity (l)	200	350		500	700
Unladen weight (kg)	125	130		150	240
Dimensions (cm)	H: 93.9 W: 96.0 D: 93.3	Short model	Long model	H: 98.3 W: 96.8 D: 129.1	H:109.3 W: 99 D: 144
		H: 93.9 W: 103.6 D: 105.2	H: 88.8 W: 79.3 D: 125.4		
Standard boom size (cm)	100	100		100	100
Range at 20 ml per m²	10,000	17,500		25,000	35,000

Dimensions and weight may vary depending on equipment



CPU control system



Filling coupling with spigot



Offset leg

Model 7.3 - Trailer



Trailer liquid spreader

Attach the trailer to the back of your vehicle for the effective treatment of icy surfaces, algae, weeds and dust. Model 7.3 is operated hydraulically, with a standard spreading width of 100 to 300 cm. The CPU control system, a drive-dependent control system that automatically adapts to speed and stops, is standard on this model. The sectioned tank makes it stable when driving around bends or braking and means less splashing. The transparent tank also makes it easy to see how much liquid is left. A wide range of optional extras is also available, such as the 12-metre hose reel with hand lance or a flower watering option.



Pump



Stainless steel boom



CPU control system

Specifications 7.3

Specifications & standard equipment		Additional equipment		
<ul style="list-style-type: none">• Two-cylinder diaphragm pump delivers 65 l/min.• Hydraulic operation of pump• CPU control system• Adjustable amount of liquid, from 10 ml/m² up• Manometer for checking liquid• Side nozzles (100 cm) for both sides• Standard spreading width of 100 to 300 cm• Sectioned tank• Suction filter		<ul style="list-style-type: none">• 12-metre hose reel with hand lance• GPS tracking with data transfer• GPS speed sensor• Flower watering kit• Filling coupling• Filling coupling in front• Hydraulic brakes• Inertia brakes• Boom size of 130 to 200 cm• Water in wheels (counterweight)• Flow meter		
Sizes & ranges				
Capacity (l)	700	1050	1400	1500
Unladen weight (kg)	295	330	420	560
Dimensions (cm)	H: 154.9 W: 144.5 D: 228.6	H: 147.9 W: 144.5 D: 276.3	H: 147.9 W: 144.5 D: 331.3	H: 173.2 W: 129.5 D: 314.8
Range at 20 ml per m ²	35,000	52,500	70,000	75,000
Standard boom size (cm)	100	100	100	100
Tyre size	10/75-15,3			

Dimensions and weight may vary depending on equipment



Flow meter



12-metre hose reel with hand lance



Filling coupling in front



Liquid spreader for lawns and artificial turf

This special machine provides maximum protection for delicate surfaces when fertilising or treating slippery lawns, golf courses or artificial turfs. Because most of the weight is spread across the wide wheel axle, ground pressure is only 0.49 kg/cm^2 and the coupling point load 80 kg, which means that both tractor and surface are subjected to minimal stress. The tank is transparent and sectioned. This makes it easy to check liquid levels while also ensuring stable, splash-free operation. The Model 7.3 - Turf is operated hydraulically and has an impressive spreading width of 1-5 metres. The CPU control system comes as standard on this model, with a range of accessories available as additional purchases.



Foldable boom



Wide wheel axle



Manometer for checking liquid

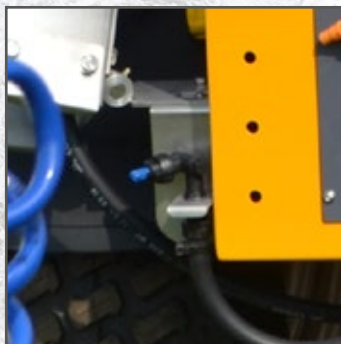
Specifications 7.3 - Turf

Specifications & standard equipment	Additional equipment
<ul style="list-style-type: none"> • Two-cylinder diaphragm pump delivers 65 l/min. • Hydraulic operation of pump • CPU control system • Adjustable amount of liquid, from 10 ml/m² up • Manometer for checking liquid • Standard spreading width of 100 to 300 cm • Sectioned tank • Suction filter 	<ul style="list-style-type: none"> • 12-metre hose reel with hand lance • GPS tracking with data transfer • GPS speed sensor • Remote control for folding boom • Flower watering kit • Filling coupling • 5 m spreader boom • Giant nozzle with reversing valve
Sizes, ranges & pressure	
Capacity (l)	700
Unladen weight (kg)	380
Dimensions (cm)	H: 154.9 W: 144.5/ 471.7 D: 228.6
Standard boom size (cm)	100
Range at 20 ml per m ²	35,000
Tyre Size	31 x 135-15
Ground pressure (kg/cm ²)	0.49
Coupling point pressure (kg)	80

Dimensions and weight may vary depending on equipment



Boom adjustment



Giant nozzle



12-metre hose reel with hand lance



Liquid spreader for vehicles with loads

This add-on model is available in a wide range of different sizes and variable capacities. Model 7.4 is designed for both larger vehicles within the EU and for other smaller electric vehicles with loads. The CPU control system comes as standard on this model. This means that the amount of liquid is automatically adjusted to the speed and stops. The transparent, sectioned tank makes it easy to check liquid levels while ensuring stable, splash-free operation. The model is operated hydraulically and pumps 65 litres a minute. An electric pump with an internal battery and independent charging function is available to purchase for this model. A number of other options are also available.



CPU control system



Stainless steel boom and nozzles



12-metre hose reel with hand lance

Specifications 7.4

Specifications & standard equipment				Additional equipment		
<ul style="list-style-type: none">• Two-cylinder diaphragm pump delivers 65 l/min.• Hydraulic operation of pump• CPU control system• Adjustable amount of liquid, from 10 ml/m2 up• Manometer for checking liquid• Side nozzles (100 cm) for both sides• Standard spreading width of 100 to 300 cm• Sectioned tank• Suction filter				<ul style="list-style-type: none">• 12-metre hose reel with hand lance• GPS tracking with data transfer• GPS speed sensor• Flower watering kit• Filling coupling• Offset leg• Reinforcement/extension for leg• Truck frame• Boom size of 130 to 200 cm• Electric pump 52 l/min. (+ 20 cm in depth)• Lashing bracket for fastening		
Sizes & ranges						
Capacity (l)	200	400	600	1050	1400	1750
Unladen weight (kg)	190 Electric model)	180	220	270	300	330
Dimensions (cm)	H: 78 W: 97 D: 124.5	H: 161.8 W: 94.5 D: 122	H: 161.8 W: 96.5 D: 164.4	H: 109.3 W: 99 D: 196.4	H: 109.3 W: 99 D: 251.1	H: 109.3 W: 99 D: 304.3
Standard boom size (cm)	100	100	100	100	100	100
Range at 20 ml per m²	10,000	20,000	30,000	52,500	70,000	75,000

Dimensions and weight may vary depending on equipment



Offset leg



Lashing bracket for fastening



Filling coupling with spigot



Mixers for all models

This mixer is available in two different sizes, 600 and 1000 litres. The mixer system consists of a large tank with mounted submersible pump and a three-way valve for adjusting the mixing or overpumping for the liquid spreader. A liquid scale lets you keep track of liquid levels. The salt solution you mix should contain between 20% and 22% salt. To check the salt content, place a drop of liquid on the refractometer and then read off the result next to the blue line. This will ensure your salt solution is correct.



Mixing pump 150 l/min.



Three-way valve with two settings



Liquid scale

Specifications 7.9

Specifications	Sizes & Dimensions		
<ul style="list-style-type: none"> • Submersible pump 150 l/min. • Three-way valve • Refractometer • Pipettes • Filling coupling • Liquid scale 	Capacity (l)	600	1000
	Unladen weight (kg)	60	75
	Dimensions (cm)	H: 100 W: 80 D:120	H: 115 W: 100 D: 120
Mixing table 20% salt solution with specific gravity 1.115			
Premixed volume of salt solution (l)	Water (l)	Salt (kg)	Range at 20 ml/m ²
100	92	23	5,000 m ²
200	184	46	10,000 m ²
300	276	69	15,000 m ²
400	368	92	20,000 m ²
500	460	115	25,000 m ²
600	553	138	30,000 m ²
700	645	161	35,000 m ²
800	736	184	40,000 m ²
900	828	207	45,000 m ²
1000	920	230	50,000 m ²

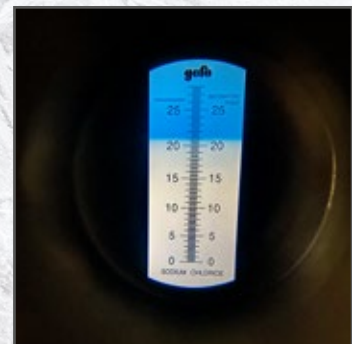
Dimensions and weight may vary depending on equipment



Filling coupling with lock



Refractometer and pipette for checking mixing ratio



Blue line on the refractometer



See Saltnex in action in spring

Saltnex takes care of both ice and weeds

All year round, Saltnex is the answer. It continues to work effectively even after winter has passed to prevent weeds from shooting up between paving tiles or to tackle algae growth on surfaces, fencing and benches.

You can add weedkiller, algae remover or gentle detergents to the tank. Alternatively, fill the machine with dust binder to get rid of dust on gravel roads, turning areas or construction sites. This makes it easy to tackle algae, weeds and dust and even spring-clean without having to invest in new machinery.

Saltnex liquid spreaders ensure that you have correct dosing, an efficient workflow and a good spreading width. The hand lance makes it easy to spread the liquid on other surfaces, such as benches, fencing, steps or similar.

Using environmentally certified products is recommended.





We recycle. It's what the environment deserves

At Saltnex and Randers Maskinfabrik, we believe that the world's challenges can only be tackled through collective action. While many of the UN's sustainable development goals are relevant to us, we have chosen three to focus on in our daily work.



We focus on promoting sustainable industrialisation and supporting innovation by embracing recycling, listening to customers' requirements and creating products that society needs. We want to help society run a little smarter and are ready to trade globally. We focus on working in a sustainable way by recycling, sorting and using resources as efficiently as possible.



The Earth's resources are finite and we need to protect them to ensure there is enough left for future generations. That's why we sort waste and recycle as much material as possible. We are constantly focused on choosing the most appropriate methods and are continually improving our processes.



Saltnex liquid spreaders use salt solutions rather than solid salt to treat surfaces, thereby reducing our salt consumption significantly. This helps to protect trees, vegetation and groundwater and gives consideration to terrestrial life, ecosystems and biodiversity.



--Saltnex--

The environmentally friendly way

Nyholmsvej 7 • 8930 Randers NØ • Denmark • VAT DK37629782 • +45 27 10 88 14 • tm@saltnex.dk • www.saltnex.com
